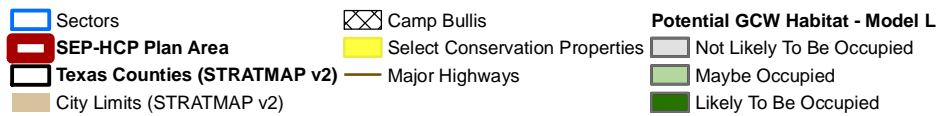
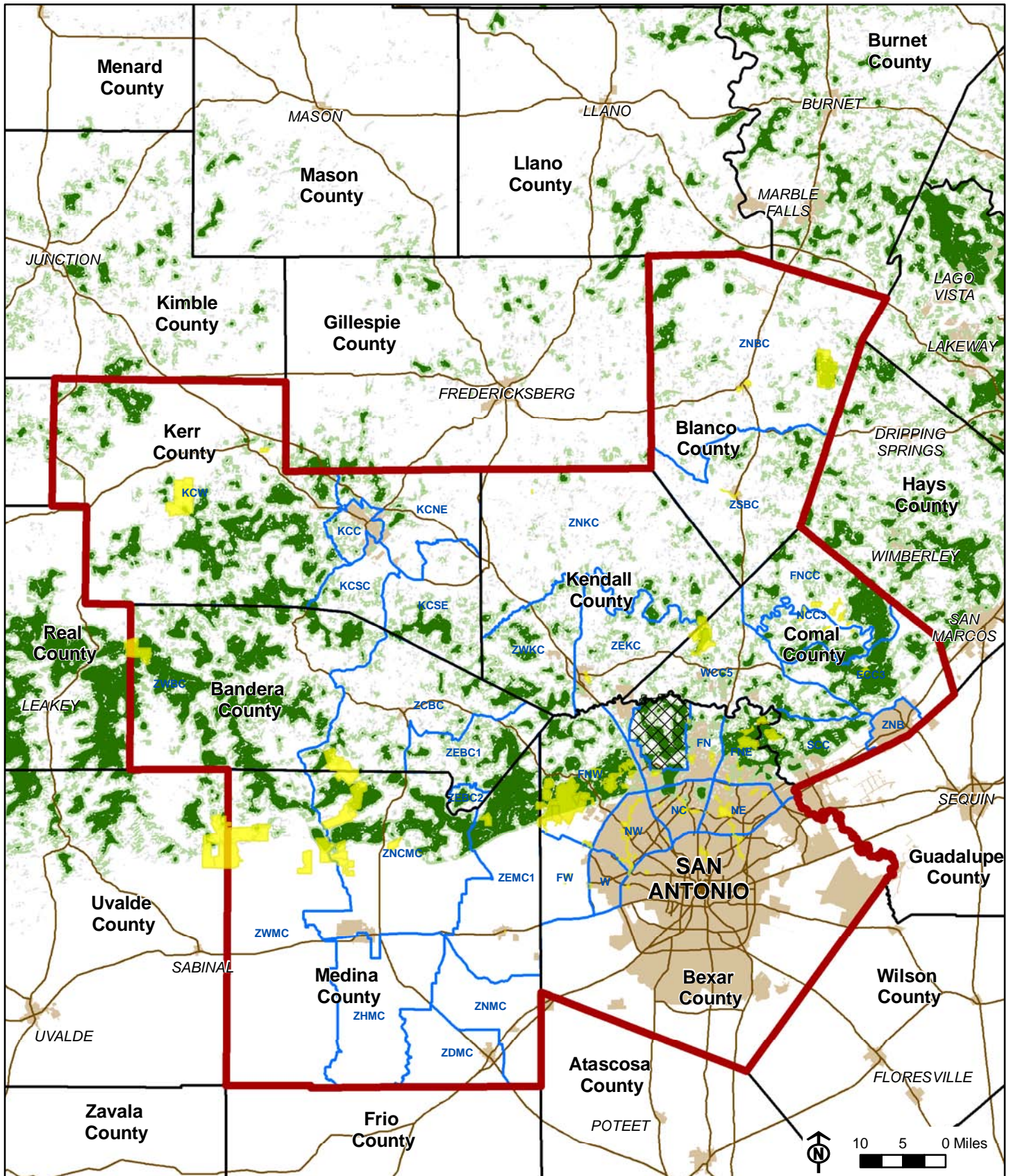
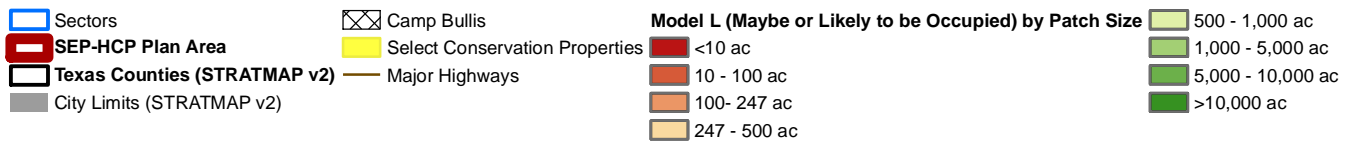
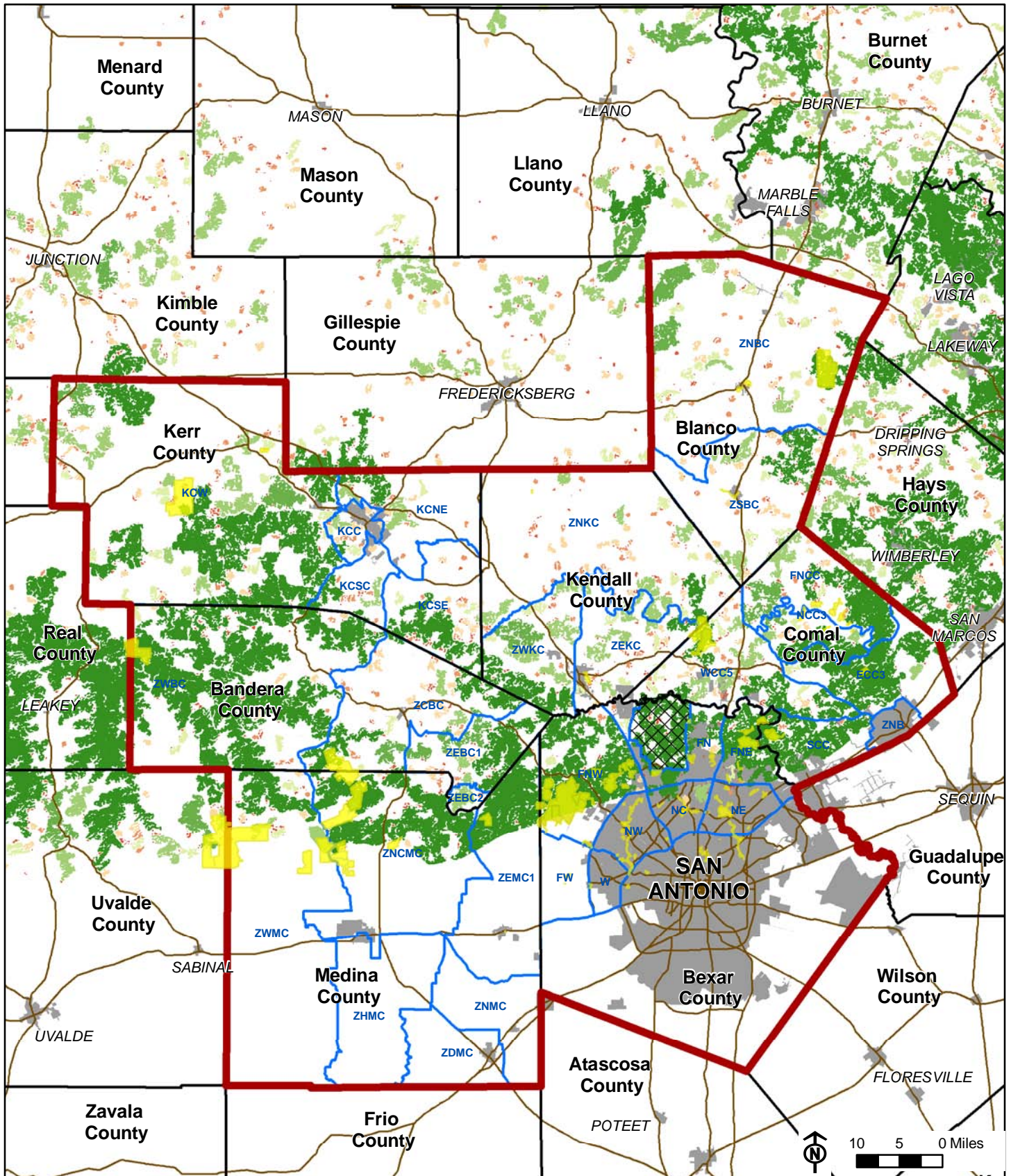


FIGURE 1. POTENTIAL GCW HABITAT - MODEL L



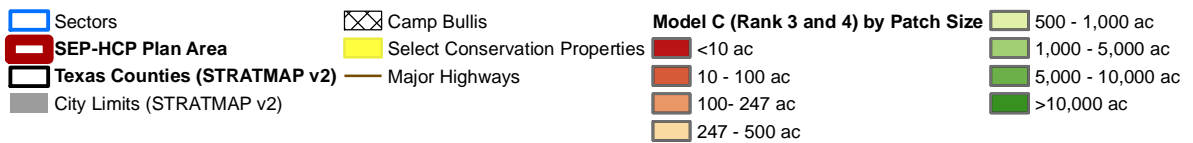
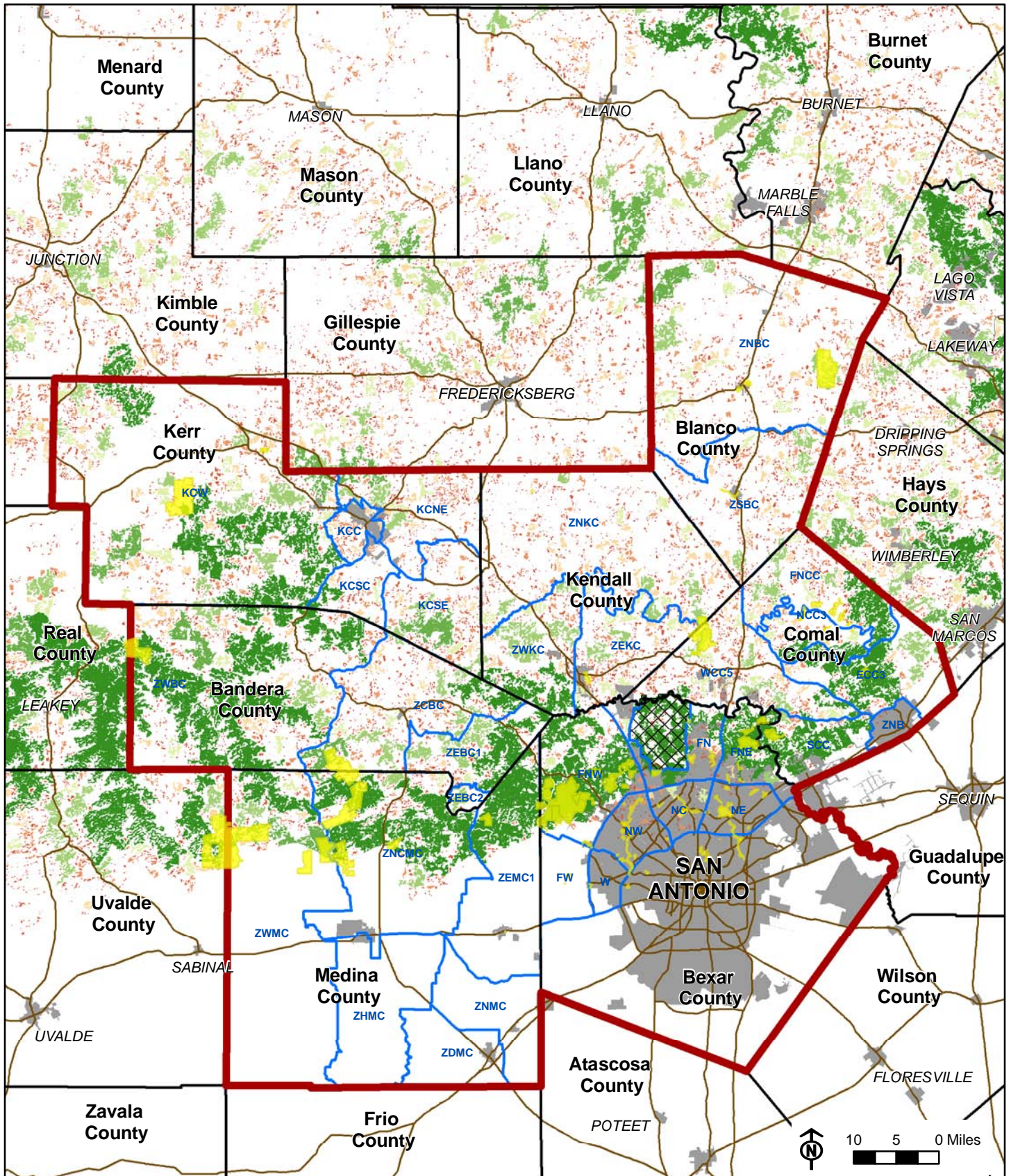
*Select conservation properties include public lands, municipally owned conservation easements, and dedicated endangered species mitigation tracts. (Information may not be complete.)

FIGURE 2. MODEL L PATCH SIZE CLASSES



*Select conservation properties include public lands, municipally owned conservation easements, and dedicated endangered species mitigation tracts. (Information may not be complete.)

FIGURE 4. MODEL C PATCH SIZE CLASSES



*Select conservation properties include public lands, municipally owned conservation easements, and dedicated endangered species mitigation tracts. (Information may not be complete.)

1. Model L - Total Acres of Potential GCW Habitat by County

Description	Total Acres of Potential Habitat	Potential Habitat Not Likely to be Occupied	Potential Habitat May be Occupied	Potential Habitat Likely to be Occupied	Recommended Working Estimate of Potential Habitat (Maybe and Likely To Be Occupied Habitat)
7-County Plan Area	1,126,710	156,307	532,013	438,390	970,403
% of Plan Area	27%	4%	13%	11%	24%
Bexar County	121,930	7,565	49,794	64,571	114,365
% of County	15%	1%	6%	8%	14%
Bandera County	244,462	25,509	115,019	103,934	218,953
% of County	48%	5%	23%	20%	43%
Blanco County	113,884	34,249	59,015	20,620	79,635
% of County	25%	8%	13%	5%	17%
Comal County	174,414	16,004	86,153	72,257	158,410
% of County	47%	4%	23%	20%	43%
Kendall County	114,915	31,995	63,779	19,141	82,920
% of County	27%	8%	15%	5%	20%
Kerr County	235,013	33,380	117,913	83,720	201,633
% of County	33%	5%	17%	12%	28%
Medina County	121,491	7,604	40,339	73,548	113,887
% of County	14%	1%	5%	9%	13%

2. Model L - Acres of Potential GCW Habitat by Land Use Sector

County	Sector	Sector Area	Potential GCW Habitat (Maybe or Likely To Be Occupied)	% of Sector
Bandera	ZCBC	136,914	34,100	25%
Bandera	ZEBC1	60,791	28,136	46%
Bandera	ZEBC2	7,230	3,594	50%
Bandera	ZWBC	305,384	153,133	50%
Bexar	FN	37,318	11,784	32%
Bexar	FNE	37,017	21,850	59%
Bexar	FNW	92,020	53,795	58%
Bexar	FW	34,869	-	0%
Bexar	NC	22,795	4,738	21%
Bexar	NE	28,714	507	2%
Bexar	NW	30,871	111	0%
Bexar	W	16,497	-	0%
Blanco	ZNBC	319,165	50,402	16%
Blanco	ZSBC	137,424	29,124	21%
Comal	ECC3	82,408	39,091	47%
Comal	FNCC	80,616	37,531	47%
Comal	NCC3	34,901	16,431	47%
Comal	SCC	49,837	25,763	52%
Comal	WCC5	105,297	39,111	37%
Comal	ZNB	14,614	34	0%
Kendall	ZEKC	80,651	16,474	20%
Kendall	ZNKC	261,236	31,539	12%
Kendall	ZWKC	82,402	32,358	39%
Kerr	KCC	20,058	5,185	26%
Kerr	KCNE	86,381	13,862	16%
Kerr	KCSC	34,719	7,310	21%
Kerr	KCSE	83,108	22,617	27%
Kerr	KCW	484,574	152,394	31%
Medina	ZDMC	55,951	-	0%
Medina	ZEMC1	129,731	30,750	24%
Medina	ZHMC	113,228	-	0%
Medina	ZNCMC	199,783	59,624	30%
Medina	ZNMC	71,502	-	0%
Medina	ZWMC	283,693	23,459	8%

3. Model L - Patch Size Distribution for Maybe or Likely To Be Occupied Habitat by County

Patch Size Category	Number of Patches Represented in the Geographic Area	Acres of Potential Habitat within Geographic Area	% of Total Habitat
7-County Plan Area			
< 10 acres	550	1,969	0.2%
10 to 100 acres	571	16,900	1.7%
100 to 247 acres	134	21,254	2.2%
247 to 500 acres	108	36,647	3.8%
500 - 1,000 acres	67	46,750	4.8%
1,000 to 5,000 acres	55	110,929	11.4%
5,000 to 10,000 acres	10	53,231	5.5%
> 10,000 acres	13	682,718	70.4%
Bexar County			
< 10 acres	41	163	0.1%
10 to 100 acres	40	1,318	1.1%
100 to 247 acres	7	1,019	0.9%
247 to 500 acres	6	1,730	1.5%
500 - 1,000 acres	3	1,886	1.6%
1,000 to 5,000 acres	1	1,668	1.5%
5,000 to 10,000 acres	0	-	0.0%
> 10,000 acres	3	107,168	93.2%
Bandera County			
< 10 acres	95	324	0.1%
10 to 100 acres	103	2,967	1.4%
100 to 247 acres	18	2,672	1.2%
247 to 500 acres	23	7,251	3.3%
500 - 1,000 acres	7	4,087	1.9%
1,000 to 5,000 acres	4	8,916	4.1%
5,000 to 10,000 acres	2	11,133	5.1%
> 10,000 acres	4	181,609	82.9%
Blanco County			
< 10 acres	93	314	0.4%
10 to 100 acres	83	2,298	2.9%
100 to 247 acres	28	4,063	5.1%
247 to 500 acres	24	7,919	9.9%
500 - 1,000 acres	19	12,607	15.8%
1,000 to 5,000 acres	12	16,371	
5,000 to 10,000 acres	4	15,170	19.0%
> 10,000 acres	2	20,928	26.3%
Comal County			
< 10 acres	75	303	0.2%
10 to 100 acres	86	2,436	1.5%
100 to 247 acres	15	2,546	1.6%
247 to 500 acres	14	4,616	2.9%
500 - 1,000 acres	7	4,951	3.1%
1,000 to 5,000 acres	9	16,807	10.6%
5,000 to 10,000 acres	1	8,689	5.5%
> 10,000 acres	3	118,047	74.5%

3. Model L - Patch Size Distribution for Maybe or Likely To Be Occupied Habitat by County

Patch Size Category	Number of Patches Represented in the Geographic Area	Acres of Potential Habitat within Geographic Area	% of Total Habitat
Kendall County			
< 10 acres	83	263	0.3%
10 to 100 acres	87	2,479	3.0%
100 to 247 acres	34	5,186	6.4%
247 to 500 acres	17	5,357	6.6%
500 - 1,000 acres	13	8,835	10.8%
1,000 to 5,000 acres	14	32,199	39.5%
5,000 to 10,000 acres	1	6,623	8.1%
> 10,000 acres	2	20,544	25.2%
Kerr County			
< 10 acres	131	451	0.2%
10 to 100 acres	142	3,950	2.0%
100 to 247 acres	32	5,036	2.5%
247 to 500 acres	24	7,629	3.8%
500 - 1,000 acres	17	12,380	6.1%
1,000 to 5,000 acres	17	29,790	14.8%
5,000 to 10,000 acres	2	11,617	5.8%
> 10,000 acres	6	130,782	64.9%
Medina County			
< 10 acres	35	143	0.1%
10 to 100 acres	38	1,305	1.1%
100 to 247 acres	5	622	0.5%
247 to 500 acres	9	2,304	2.0%
500 - 1,000 acres	4	2,108	1.9%
1,000 to 5,000 acres	4	4,811	4.2%
5,000 to 10,000 acres	0	-	0.0%
> 10,000 acres	2	102,593	90.1%

4. Model L - Acres of Potential GCW Habitat (Maybe and Likely To Be Occupied) in Patch Size Classes for Land Use Sectors

County	Sector	Sector Area	< 10 acres	10 to 100 acres	100 to 247 acres	247 to 500 acres	500 - 1,000 acres	1,000 to 5,000 acres	5,000 to 10,000 acres	> 10,000 acres
Bandera	ZCBC	136,914	102	1,044	1,433	4,331	1,284	3,103	3,938	18,864
	% of Sector		0.1%	0.8%	1.0%	3.2%	0.9%	2.3%	2.9%	13.8%
Bandera	ZEBC1	60,791	40	546	269	831	-	2,444	7,196	16,811
	% of Sector		0.1%	0.9%	0.4%	1.4%	0.0%	4.0%	11.8%	27.7%
Bandera	ZEBC2	7,230	14	-	172	-	-	3,368	-	40
	% of Sector		0.2%	0.0%	2.4%	0.0%	0.0%	46.6%	0.0%	0.6%
Bandera	ZWBC	305,384	168	1,377	795	2,115	2,813	-	-	145,865
	% of Sector		0.1%	0.5%	0.3%	0.7%	0.9%	0.0%	0.0%	47.8%
Bexar	FN	37,318	37	322	139	371	628	-	-	10,287
	% of Sector		0.1%	0.9%	0.4%	1.0%	1.7%	0.0%	0.0%	27.6%
Bexar	FNE	37,017	23	171	135	-	572	-	-	20,950
	% of Sector		0.1%	0.5%	0.4%	0.0%	1.5%	0.0%	0.0%	56.6%
Bexar	FNW	92,020	59	177	431	664	675	-	-	51,789
	% of Sector		0.1%	0.2%	0.5%	0.7%	0.7%	0.0%	0.0%	56.3%
Bexar	FW	34,869	-	-	-	-	-	-	-	-
	% of Sector		0.0%	0.0%	0.0%	0.0%	0.0%	0.0%	0.0%	0.0%
Bexar	NC	22,795	28	40	142	701	-	1,668	-	2,159
	% of Sector		0.1%	0.2%	0.6%	3.1%	0.0%	7.3%	0.0%	9.5%
Bexar	NE	28,714	7	176	173	-	-	-	-	151
	% of Sector		0.0%	0.6%	0.6%	0.0%	0.0%	0.0%	0.0%	0.5%
Bexar	NW	30,871	-	108	-	1	-	-	-	2
	% of Sector		0.0%	0.3%	0.0%	0.0%	0.0%	0.0%	0.0%	0.0%
Bexar	W	16,497	-	-	-	-	-	-	-	-
	% of Sector		0.0%	0.0%	0.0%	0.0%	0.0%	0.0%	0.0%	0.0%
Blanco	ZNBC	319,165	163	1,531	3,203	3,187	10,539	7,871	13,941	9,968
	% of Sector		0.1%	0.5%	1.0%	1.0%	3.3%	2.5%	4.4%	3.1%

4. Model L - Acres of Potential GCW Habitat (Maybe and Likely To Be Occupied) in Patch Size Classes for Land Use Sectors

County	Sector	Sector Area	< 10 acres	10 to 100 acres	100 to 247 acres	247 to 500 acres	500 - 1,000 acres	1,000 to 5,000 acres	5,000 to 10,000 acres	> 10,000 acres
Blanco	ZSBC	137,424	151	765	828	4,729	2,068	8,437	1,217	10,930
	% of Sector		0.1%	0.6%	0.6%	3.4%	1.5%	6.1%	0.9%	8.0%
Comal	ECC3	82,408	29	169	1	121	859	1,159	-	36,753
	% of Sector		0.0%	0.2%	0.0%	0.1%	1.0%	1.4%	0.0%	44.6%
Comal	FNCC	80,616	84	832	590	963	503	4,794	6,699	23,066
	% of Sector		0.1%	1.0%	0.7%	1.2%	0.6%	5.9%	8.3%	28.6%
Comal	NCC3	34,901	51	118	324	670	695	1,996	1,711	10,864
	% of Sector		0.1%	0.3%	0.9%	1.9%	2.0%	5.7%	4.9%	31.1%
Comal	SCC	49,837	28	33	421	-	-	-	-	25,282
	% of Sector		0.1%	0.1%	0.8%	0.0%	0.0%	0.0%	0.0%	50.7%
Comal	WCC5	105,297		1,278	1,203	2,857	2,892	8,859	279	21,635
	% of Sector		0.0%	1.2%	1.1%	2.7%	2.7%	8.4%	0.3%	20.5%
Comal	ZNB	14,614	4	-	-	-	-	-	-	30
	% of Sector		0.0%	0.0%	0.0%	0.0%	0.0%	0.0%	0.0%	0.2%
Kendall	ZEKC	80,651	99	1,031	907	731	2,917	8,574	-	2,215
	% of Sector		0.1%	1.3%	1.1%	0.9%	3.6%	10.6%	0.0%	2.7%
Kendall	ZNKC	261,236	124	1,206	3,774	4,463	3,658	13,302	1	5,010
	% of Sector		0.0%	0.5%	1.4%	1.7%	1.4%	5.1%	0.0%	1.9%
Kendall	ZWKC	82,402	48	322	489	-	2,156	9,802	6,622	12,918
	% of Sector		0.1%	0.4%	0.6%	0.0%	2.6%	11.9%	8.0%	15.7%
Kerr	KCC	20,058	20	31	687	1,334	1,127	1,352	-	634
	% of Sector		0.1%	0.2%	3.4%	6.7%	5.6%	6.7%	0.0%	3.2%
Kerr	KCNE	86,381	25	317	556	596	664	5,182	-	6,522
	% of Sector		0.0%	0.4%	0.6%	0.7%	0.8%	6.0%	0.0%	7.6%
Kerr	KCSC	34,719	38	198	876	346	2	1,770	-	4,078
	% of Sector		0.1%	0.6%	2.5%	1.0%	0.0%	5.1%	0.0%	11.7%

4. Model L - Acres of Potential GCW Habitat (Maybe and Likely To Be Occupied) in Patch Size Classes for Land Use Sectors

County	Sector	Sector Area	< 10 acres	10 to 100 acres	100 to 247 acres	247 to 500 acres	500 - 1,000 acres	1,000 to 5,000 acres	5,000 to 10,000 acres	> 10,000 acres
Kerr	KCSE	83,108	86	895	1,002	2,075	1,093	240	-	17,226
% of Sector			0.1%	1.1%	1.2%	2.5%	1.3%	0.3%	0.0%	20.7%
Kerr	KCW	484,574	284	2,511	1,889	3,222	9,439	21,113	11,617	102,319
% of Sector			0.1%	0.5%	0.4%	0.7%	1.9%	4.4%	2.4%	21.1%
Medina	ZDMC	55,951	-	-	-	-	-	-	-	-
% of Sector			0.0%	0.0%	0.0%	0.0%	0.0%	0.0%	0.0%	0.0%
Medina	ZEMC1	129,731	10	48	-	-	-	-	-	30,692
% of Sector			0.0%	0.0%	0.0%	0.0%	0.0%	0.0%	0.0%	23.7%
Medina	ZHMC	113,228	-	-	-	-	-	-	-	-
% of Sector			0.0%	0.0%	0.0%	0.0%	0.0%	0.0%	0.0%	0.0%
Medina	ZNMC	199,783	75	693	425	1,036	327	2	-	57,067
% of Sector			0.0%	0.3%	0.2%	0.5%	0.2%	0.0%	0.0%	28.6%
Medina	ZNMC	71,502	-	-	-	-	-	-	-	-
% of Sector			0.0%	0.0%	0.0%	0.0%	0.0%	0.0%	0.0%	0.0%
Medina	ZWMC	283,693	57	562	192	1,247	1,800	4,821	-	14,779
% of Sector			0.0%	0.2%	0.1%	0.4%	0.6%	1.7%	0.0%	5.2%

5. Model C - Total Acres of Potential GCW Habitat by County

Description	Total Acres of Potential Habitat (Ranks 1 - 4)	Rank 1 - Low Potential Habitat or Not Habitat	Rank 2 - Low Potential Habitat or Probably Not Habitat	Rank 3 - Moderate Potential Habitat or Low Potential Habitat	Rank 4 - Moderate or High Potential Habitat	Recommended Working Estimate of Potential Habitat (Rank 3 and Rank 4 Habitat)
7-County Plan Area	1,229,848	175,641	210,147	240,159	603,901	844,060
% of Plan Area	30%	4%	5%	6%	15%	20%
Bexar County	130,910	10,852	15,514	20,265	84,279	104,544
% of County	16%	1%	2%	3%	10%	13%
Bandera County	262,086	30,525	39,565	50,017	141,979	191,996
% of County	51%	6%	8%	10%	28%	38%
Blanco County	113,644	26,363	25,083	25,200	36,998	62,198
% of County	25%	6%	5%	6%	8%	14%
Comal County	171,150	23,162	31,106	34,520	82,362	116,882
% of County	47%	6%	8%	9%	22%	32%
Kendall County	129,451	27,491	27,061	26,764	48,135	74,899
% of County	31%	6%	6%	6%	11%	18%
Kerr County	259,249	42,637	49,900	55,077	111,635	166,712
% of County	37%	6%	7%	8%	16%	24%
Medina County	154,123	11,753	19,507	26,397	96,466	122,863
% of County	18%	1%	2%	3%	11%	14%

6. Model C - Acres of Potential GCW Habitat by Land Use Sector

County	Sector	Sector Area (acres)	Rank 3 and Rank 4 Habitat Acres	% of Sector
Bandera	ZCBC	136,914	34,056	25%
Bandera	ZEBC1	60,791	24,707	41%
Bandera	ZEBC2	7,230	2,021	28%
Bandera	ZWBC	305,384	129,387	42%
Bexar	FN	37,318	10,725	29%
Bexar	FNE	37,017	18,477	50%
Bexar	FNW	92,020	51,769	56%
Bexar	FW	34,869	77	0%
Bexar	NC	22,795	2,844	12%
Bexar	NE	28,714	473	2%
Bexar	NW	30,871	1,474	5%
Bexar	W	16,497	-	0%
Blanco	ZNBC	319,165	41,469	13%
Blanco	ZSBC	137,424	18,979	14%
Comal	ECC3	82,408	30,661	37%
Comal	FNCC	80,616	22,842	28%
Comal	NCC3	34,901	10,657	31%
Comal	SCC	49,837	21,996	44%
Comal	WCC5	105,297	26,704	25%
Comal	ZNB	14,614	172	1%
Kendall	ZEKC	80,651	16,865	21%
Kendall	ZNKC	261,236	31,823	12%
Kendall	ZWKC	82,402	28,859	35%
Kerr	KCC	20,058	3,414	17%
Kerr	KCNE	86,381	15,867	18%
Kerr	KCSC	34,719	5,812	17%
Kerr	KCSE	83,108	19,155	23%
Kerr	KCW	484,574	122,341	25%
Medina	ZDMC	55,951	-	0%
Medina	ZEMC1	129,731	31,384	24%
Medina	ZHMC	113,228	-	0%
Medina	ZNCMC	199,783	63,015	32%
Medina	ZNMC	71,502	-	0%
Medina	ZWMC	283,693	28,463	10%

7. Model C - Patch Size Distribution for Rank 3 and 4 Habitat by County

Patch Size Category	Number of Patches Represented in the Geographic Area	Acres of Potential Habitat within Geographic Area	% of Total Habitat
7-County Plan Area			
< 10 acres	8,515	17,810	2.1%
10 to 100 acres	2,472	75,007	8.9%
100 to 247 acres	304	46,275	5.5%
247 to 500 acres	137	45,341	5.4%
500 - 1,000 acres	76	50,284	6.0%
1,000 to 5,000 acres	68	116,944	13.9%
5,000 to 10,000 acres	10	48,974	5.8%
> 10,000 acres	10	443,425	52.5%
Bexar County			
< 10 acres	486	957	0.9%
10 to 100 acres	129	3,956	3.8%
100 to 247 acres	24	3,887	3.7%
247 to 500 acres	5	1,709	1.6%
500 - 1,000 acres	4	2,709	2.6%
1,000 to 5,000 acres	1	1,061	1.0%
5,000 to 10,000 acres	-	-	0.0%
> 10,000 acres	4	90,263	86.3%
Bandera County			
< 10 acres	1,305	2,709	1.4%
10 to 100 acres	410	13,020	6.8%
100 to 247 acres	45	6,541	3.4%
247 to 500 acres	27	8,449	4.4%
500 - 1,000 acres	10	5,919	3.1%
1,000 to 5,000 acres	15	25,732	13.4%
5,000 to 10,000 acres	2	12,377	6.4%
> 10,000 acres	4	117,249	61.1%
Blanco County			
< 10 acres	1,251	2,752	4.4%
10 to 100 acres	418	11,926	19.2%
100 to 247 acres	62	9,408	15.1%
247 to 500 acres	25	7,630	12.3%
500 - 1,000 acres	15	8,276	13.3%
1,000 to 5,000 acres	13	16,088	
5,000 to 10,000 acres	1	6,118	9.8%
> 10,000 acres	-	-	0.0%
Comal County			
< 10 acres	1,288	2,344	2.0%
10 to 100 acres	330	10,217	8.7%
100 to 247 acres	40	5,661	4.8%
247 to 500 acres	18	6,126	5.2%
500 - 1,000 acres	14	8,175	7.0%
1,000 to 5,000 acres	9	18,717	16.0%
5,000 to 10,000 acres	2	485	0.4%
> 10,000 acres	2	65,157	55.7%

7. Model C - Patch Size Distribution for Rank 3 and 4 Habitat by County

Patch Size Category	Number of Patches Represented in the Geographic Area	Acres of Potential Habitat within Geographic Area	% of Total Habitat
Kendall County			
< 10 acres	1,444	3,037	4.1%
10 to 100 acres	435	11,732	15.7%
100 to 247 acres	50	6,904	9.2%
247 to 500 acres	27	7,810	10.4%
500 - 1,000 acres	15	10,006	13.4%
1,000 to 5,000 acres	14	22,778	30.4%
5,000 to 10,000 acres	-	-	0.0%
> 10,000 acres	1	12,632	16.9%
Kerr County			
< 10 acres	2,160	4,668	2.8%
10 to 100 acres	641	18,573	11.1%
100 to 247 acres	73	11,060	6.6%
247 to 500 acres	36	10,986	6.6%
500 - 1,000 acres	21	12,803	7.7%
1,000 to 5,000 acres	19	26,527	15.9%
5,000 to 10,000 acres	4	19,980	12.0%
> 10,000 acres	4	62,114	37.3%
Medina County			
< 10 acres	612	1,028	0.8%
10 to 100 acres	144	4,562	3.7%
100 to 247 acres	19	2,220	1.8%
247 to 500 acres	6	1,496	1.2%
500 - 1,000 acres	3	1,701	1.4%
1,000 to 5,000 acres	4	5,927	4.8%
5,000 to 10,000 acres	2	10,017	8.2%
> 10,000 acres	3	95,912	78.1%

8. Model C - Acres of Potential GCW Habitat (Ranks 3 and 4) in Patch Size Classes for Land Use Sectors

County	Sector	Sector Area	< 10 acres	10 to 100 acres	100 to 247 acres	247 to 500 acres	500 - 1,000 acres	1,000 to 5,000 acres	5,000 to 10,000 acres	> 10,000 acres
Bandera	ZCBC	136,914	1,116	4,715	2,548	2,358	1,840	9,194	4,940	7,345
	% of Sector		0.8%	3.4%	1.9%	1.7%	1.3%	6.7%	3.6%	5.4%
Bandera	ZEBC1	60,791	289	1,644	824	258	668	7,079	-	13,946
	% of Sector		0.5%	2.7%	1.4%	0.4%	1.1%	11.6%	0.0%	22.9%
Bandera	ZEBC2	7,230	35	225	-	-	63	1,696	-	2
	% of Sector		0.5%	3.1%	0.0%	0.0%	0.9%	23.5%	0.0%	0.0%
Bandera	ZWBC	305,384	1,247	6,361	3,127	5,838	3,376	6,853	7,247	95,338
	% of Sector		0.4%	2.1%	1.0%	1.9%	1.1%	2.2%	2.4%	31.2%
Bexar	FN	37,318	140	1,086	1,082	422	541	-	-	7,453
	% of Sector		0.4%	2.9%	2.9%	1.1%	1.4%	0.0%	0.0%	20.0%
Bexar	FNE	37,017	77	551	119	290	-	1,061	-	16,379
	% of Sector		0.2%	1.5%	0.3%	0.8%	0.0%	2.9%	0.0%	44.2%
Bexar	FNW	92,020	287	774	1,336	410	718	-	-	48,244
	% of Sector		0.3%	0.8%	1.5%	0.4%	0.8%	0.0%	0.0%	52.4%
Bexar	FW	34,869	-	77	-	-	-	-	-	-
	% of Sector		0.0%	0.2%	0.0%	0.0%	0.0%	0.0%	0.0%	0.0%
Bexar	NC	22,795	122	444	339	585	1,355	-	-	-
	% of Sector		0.5%	1.9%	1.5%	2.6%	5.9%	0.0%	0.0%	0.0%
Bexar	NE	28,714	33	201	238	-	-	-	-	-
	% of Sector		0.1%	0.7%	0.8%	0.0%	0.0%	0.0%	0.0%	0.0%
Bexar	NW	30,871	201	645	629	-	-	-	-	-
	% of Sector		0.7%	2.1%	2.0%	0.0%	0.0%	0.0%	0.0%	0.0%
Bexar	W	16,497	-	-	-	-	-	-	-	-
	% of Sector		0.0%	0.0%	0.0%	0.0%	0.0%	0.0%	0.0%	0.0%
Blanco	ZNBC	319,165	1,707	6,848	5,292	3,989	6,444	11,068	6,120	-
	% of Sector		0.5%	2.1%	1.7%	1.2%	2.0%	3.5%	1.9%	0.0%

8. Model C - Acres of Potential GCW Habitat (Ranks 3 and 4) in Patch Size Classes for Land Use Sectors

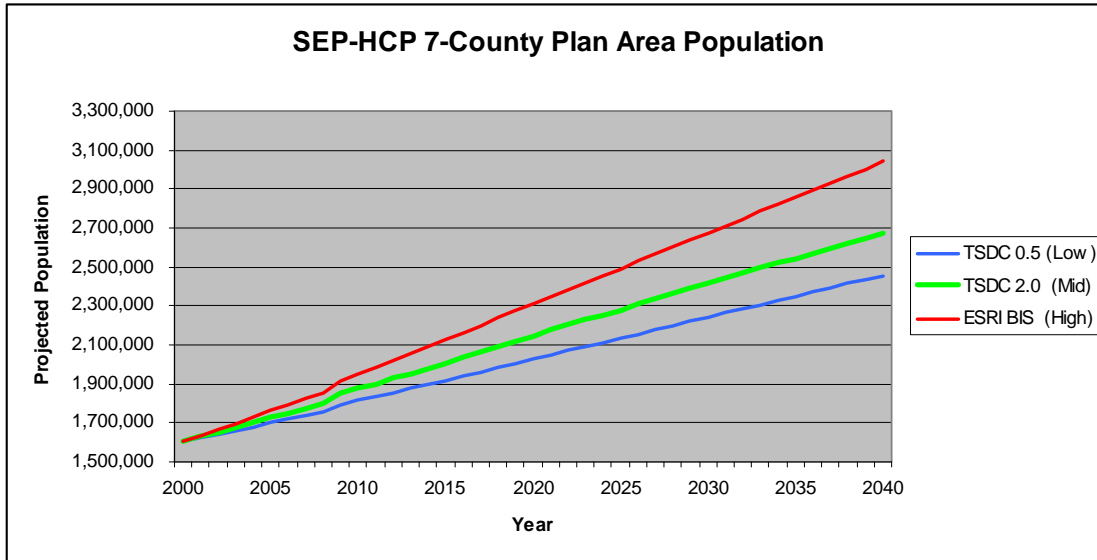
County	Sector	Sector Area	< 10 acres	10 to 100 acres	100 to 247 acres	247 to 500 acres	500 - 1,000 acres	1,000 to 5,000 acres	5,000 to 10,000 acres	> 10,000 acres
Blanco	ZSBC	137,424	963	4,742	4,078	3,644	1,345	4,208	-	-
% of Sector			0.7%	3.5%	3.0%	2.7%	1.0%	3.1%	0.0%	0.0%
Comal	ECC3	82,408	271	944	814	1,023	-	5,171	427	22,012
% of Sector			0.3%	1.1%	1.0%	1.2%	0.0%	6.3%	0.5%	26.7%
Comal	FNCC	80,616	621	2,735	1,323	711	2,147	5,248	58	10,000
% of Sector			0.8%	3.4%	1.6%	0.9%	2.7%	6.5%	0.1%	12.4%
Comal	NCC3	34,901	238	715	1,010	1,104	1,909	-	-	5,682
% of Sector			0.7%	2.0%	2.9%	3.2%	5.5%	0.0%	0.0%	16.3%
Comal	SCC	49,837	161	497	557	-	34	823	-	19,924
% of Sector			0.3%	1.0%	1.1%	0.0%	0.1%	1.7%	0.0%	40.0%
Comal	WCC5	105,297		4,844	2,329	2,725	3,980	7,349	-	4,481
% of Sector			0.0%	4.6%	2.2%	2.6%	3.8%	7.0%	0.0%	4.3%
Comal	ZNB	14,614	18	122	-	-	-	-	-	32
% of Sector			0.1%	0.8%	0.0%	0.0%	0.0%	0.0%	0.0%	0.2%
Kendall	ZEKC	80,651	794	3,542	2,401	1,111	5,641	3,137	-	239
% of Sector			1.0%	4.4%	3.0%	1.4%	7.0%	3.9%	0.0%	0.3%
Kendall	ZNKC	261,236	2,080	7,045	3,957	6,761	3,894	8,086	-	-
% of Sector			0.8%	2.7%	1.5%	2.6%	1.5%	3.1%	0.0%	0.0%
Kendall	ZWKC	82,402	436	2,214	1,037	889	1,357	10,548	-	12,379
% of Sector			0.5%	2.7%	1.3%	1.1%	1.6%	12.8%	0.0%	15.0%
Kerr	KCC	20,058	147	715	964	1,209	235	130	-	14
% of Sector			0.7%	3.6%	4.8%	6.0%	1.2%	0.6%	0.0%	0.1%
Kerr	KCNE	86,381	781	3,139	1,853	1,321	1,402	4,850	2,522	-
% of Sector			0.9%	3.6%	2.1%	1.5%	1.6%	5.6%	2.9%	0.0%
Kerr	KCSC	34,719	222	1,121	636	679	583	-	-	2,570
% of Sector			0.6%	3.2%	1.8%	2.0%	1.7%	0.0%	0.0%	7.4%

8. Model C - Acres of Potential GCW Habitat (Ranks 3 and 4) in Patch Size Classes for Land Use Sectors

County	Sector	Sector Area	< 10 acres	10 to 100 acres	100 to 247 acres	247 to 500 acres	500 - 1,000 acres	1,000 to 5,000 acres	5,000 to 10,000 acres	> 10,000 acres
Kerr	KCSE	83,108	626	3,456	1,697	1,860	780	2,818	7,704	214
% of Sector			0.8%	4.2%	2.0%	2.2%	0.9%	3.4%	9.3%	0.3%
Kerr	KCW	484,574	2,887	10,068	5,905	5,877	9,806	18,734	9,769	59,295
% of Sector			0.6%	2.1%	1.2%	1.2%	2.0%	3.9%	2.0%	12.2%
Medina	ZDMC	55,951	-	-	-	-	-	-	-	-
% of Sector			0.0%	0.0%	0.0%	0.0%	0.0%	0.0%	0.0%	0.0%
Medina	ZEMC1	129,731	56	426	103	-	-	-	-	30,799
% of Sector			0.0%	0.3%	0.1%	0.0%	0.0%	0.0%	0.0%	23.7%
Medina	ZHMC	113,228	-	-	-	-	-	-	-	-
% of Sector			0.0%	0.0%	0.0%	0.0%	0.0%	0.0%	0.0%	0.0%
Medina	ZNCCM	199,783	634	2,523	1,196	305	973	3,302	579	53,503
% of Sector			0.3%	1.3%	0.6%	0.2%	0.5%	1.7%	0.3%	26.8%
Medina	ZNMC	71,502	-	-	-	-	-	-	-	-
% of Sector			0.0%	0.0%	0.0%	0.0%	0.0%	0.0%	0.0%	0.0%
Medina	ZWMC	283,693	338	1,609	924	1,192	724	2,634	9,432	11,611
% of Sector			0.1%	0.6%	0.3%	0.4%	0.3%	0.9%	3.3%	4.1%

SEP-HCP PRELIMINARY IMPACTS ANALYSIS SUMMARY

Projected Population Growth



Land Development Projections

County	Area of LU Sectors (ac)	Acres of New Development				Total Acres of New Development 2009 - 2040
		2000 - 2009	2009 - 2020	2020 - 2030	2030 - 2040	
Bandera	510,319	6,538	6,233	3,940	12,951	23,124
Bexar*	300,101	64,163	42,681	36,253	10,372	89,306
Blanco	456,589	677	789	592	4,369	5,750
Comal	367,673	45,387	25,091	21,089	40,599	86,779
Kendall	424,289	22,663	14,342	5,192	56,764	76,298
Kerr	708,840	5,336	6,466	4,060	4,721	15,247
Medina	853,888	11,622	13,846	10,543	20,323	44,712
TOTAL	3,621,699	156,386	109,448	81,669	150,099	341,216
w/o Comal	3,254,026	110,999	84,357	60,580	109,500	254,437

* Not all of Bexar County was included in the land use analysis – see maps next page

Estimated GCW Habitat Loss – Model L

County	Potential GCW Habitat in 2000 (ac)*			Estimated GCW Habitat Loss 2009 – 2040 (ac)			
	Low Estimate	Mid Estimate	High Estimate	Low Estimate	Mid Estimate	High Estimate	Average Annual Loss (Mid)
Bandera	103,919	218,963	244,466	3,090	8,249	9,777	266
Bexar	52,069	92,785	99,880	14,635	26,317	28,404	849
Blanco	20,591	79,526	113,754	240	1,162	1,614	37
Comal	72,016	157,961	173,950	16,573	37,367	40,939	1,205
Kendall	18,778	80,371	112,133	4,253	15,937	21,372	514
Kerr	83,755	201,368	234,591	1,115	3,809	4,604	123
Medina	73,527	113,833	121,440	4,842	6,250	6,434	202
TOTAL	424,655	944,807	1,100,214	44,748	99,091	113,144	3,196
w/o Comal	352,639	786,846	926,264	28,175	61,724	72,205	1,991

* GCW habitat estimates based on Loomis GCW Habitat Model:

- Low Estimate = Potential habitat of any quality class that is **Likely To Be Occupied**
- Mid Estimate = Potential habitat of any quality class that **May Be** or is **Likely To Be Occupied**
- High Estimate = Complete Loomis Model - **all quality and occupancy** classes (including habitat that is **Not Likely To Be Occupied**)

Estimated GCW Habitat Loss – Model C

County	Potential GCW Habitat in 2000 (ac)*			Estimated GCW Habitat Loss 2009 – 2040 (ac)			
	Low Estimate	Mid Estimate	High Estimate	Low Estimate	Mid Estimate	High Estimate	Average Annual Loss (Mid)
Bandera	140,569	190,171	259,717	5,196	7,395	10,806	239
Bexar	68,933	85,839	108,610	19,145	24,121	30,517	778
Blanco	35,959	60,448	110,562	411	797	1,566	26
Comal	79,487	113,032	165,986	19,759	27,317	39,652	881
Kendall	49,258	77,547	136,837	9,834	15,108	25,805	487
Kerr	111,601	166,589	258,965	1,924	3,099	5,203	100
Medina	96,471	122,862	154,116	5,406	6,434	7,527	208
TOTAL	582,278	816,488	1,194,793	61,675	84,271	121,076	2,718
w/o Comal	502,791	703,456	1,028,807	41,916	56,954	81,424	1,837

* GCW habitat estimates based on Diamond (2007) Model C:

- Low Estimate = Rank 4 Habitat
- Mid Estimate = Rank 3 and Rank 4 Habitat
- High Estimate = Ranks 1 - 4

Estimated BCV Habitat Loss

County	BCV Habitat Estimate (ac)*	Estimated BCV Habitat Loss 2009 – 2040 (ac)	Ave Annual BCV Habitat Loss 2009 – 2040 (ac)
Bandera	7,599	344	11
Bexar	47,854	5,315	172
Blanco	2,275	29	1
Comal	3,591	847	27
Kendall	4,945	890	29
Kerr	53,074	1,143	37
Medina	62,292	3,257	105
Total w/o Comal	178,039	10,978	354.2

* As reported in Wilkins et al. (2006)

County	Sector	Total Area	KFR Area	New Development 2009 - 2040	Redevelopment 2009 - 2040	Total Development 2009 - 2040	Karst Zone 1 Impacts 2009 - 2040	Karst Zone 2 Impacts 2009 - 2040	Karst Zone 3 Impacts 2009 - 2040	Karst Zone 4 Impacts 2009 - 2040
Bandera	ZEBC1	60,791	N	5,566	1,779	7,345	-	-	-	38
Bandera	ZEBC2	7,230	N	1,136	547	1,683	-	-	-	30
Bexar	FN	37,318	N	13,066	4,251	17,316	5,146	3,717	4,242	-
Bexar	FNE	37,017	N	15,027	4,038	19,065	2,280	11,012	4,152	-
Bexar	FNW	92,020	N	21,426	7,799	29,225	6,461	4,486	8,597	1,510
Bexar	FW	34,869	CAC	18,516	3,806	22,322	2,248	5,335	9,189	-
Bexar	NC	22,795	N	3,399	3,062	6,460	38	2,075	3,544	-
Bexar	NE*	17,689	N	4,022	3,677	7,699	-	1,337	6,171	-
Bexar	NE*	11,025	AH	2,507	3,677	3,788	-	-	-	-
Bexar	NW	30,871	N	5,641	4,109	9,750	50	597	7,673	-
Bexar	W	16,497	CAC	5,706	2,278	7,984	168	2,195	3,351	-
Medina	ZEMC1	129,731	N	20,424	5,925	26,349	-	4,087	3,281	1,666
Medina	ZNCMC	199,783	N	2,762	4,071	6,833	-	1	-	-
Bexar	SOUTH	49,909	AH	-	6,576	6,576	32	498	3,533	-
SEP KARST REGION		747,545		119,195	55,595	172,395	16,424	35,340	53,735	3,244

County	Sector	Estimated Number of Species Caves		Estimated Number of Species Caves Affected by Development (2009 - 2040)		Approx. Surface Area Associated with Affected Species Caves (2009 - 2040) - 10 ac per cave		Approx. Surface Area Associated with Affected Species Caves (2009 - 2040) - 50 ac per cave	
		Estimated Number of Species Caves - Zones 1 and 2	Estimated Number of Species Caves - Zones 3 and 4	Estimated Number of Species Caves Affected by Development (2009 - 2040)	% of Total Est. Caves	Approx. Surface Area Associated with Affected Species Caves (2009 - 2040) - 10 ac per cave	% of Total Karst Zone 1 - 4	Approx. Surface Area Associated with Affected Species Caves (2009 - 2040) - 50 ac per cave	% of Total Karst Zone 1 - 4
Bandera	ZEBC1	-	-	-		-	0%	-	0%
Bandera	ZEBC2	-	-	-		-	0%	-	0%
Bexar	FN	97	-	46	47%	460	2%	2,300	8%
Bexar	FNE	132	-	68	52%	680	2%	3,400	10%
Bexar	FNW	176	2	56	31%	560	1%	2,800	4%
Bexar	FW	15	-	38	253%	380	1%	1,900	7%
Bexar	NC	38	1	11	28%	110	1%	550	3%
Bexar	NE*	16	1	7	41%	70	0%	350	2%
Bexar	NE*	6	-	-		-	0%	-	0%
Bexar	NW	10	1	5	45%	50	0%	250	1%
Bexar	W	6	-	12	200%	120	1%	600	5%
Medina	ZEMC1	103	1	21	20%	210	0%	1,050	2%
Medina	ZNMC	-	-	-		-	0%	-	0%
Bexar	SOUTH	5	-	3	60%	30	0%	150	0%
SEP KARST REGION		604	6	267	44%	2,670	1%	13,350	5%

County	Sector	Approx. Surface Area	
		Associated with Affected Species Caves (2009 - 2040) - 100 ac per cave	% of Total Karst Zone 1 - 4
Bandera	ZEBC1	-	0%
Bandera	ZEBC2	-	0%
Bexar	FN	4,600	16%
Bexar	FNE	6,800	20%
Bexar	FNW	5,600	8%
Bexar	FW	3,800	15%
Bexar	NC	1,100	6%
Bexar	NE*	700	4%
Bexar	NE*	-	0%
Bexar	NW	500	2%
Bexar	W	1,200	10%
Medina	ZEMC1	2,100	5%
Medina	ZNMC	-	0%
Bexar	SOUTH	300	1%
SEP KARST REGION		26,700	9%