

# **Public Access and HCP's**

**Thoughts for the Southern Edwards HCP Biological Advisory  
Team**

**William A. Conrad CPRM  
Secretary BCCP Coordinating  
Committee**

**October 8, 2010**

# BCCP and Public Access

- HCP addresses conservation and public policy
- Multiple land uses and available conservation lands
- Organizational Capacity to manage uses



# HCP Addresses Conservation and Public Policy

## ESA Compliance:

- A statutory response
- Biological threat or need
- Social, economic, public safety implications
- HCP as a tool to address diverse expectations



# HCP Addresses Conservation and Public Policy

## Conservation/Recovery

- Mitigate threats
- Conserves habitat
- Analyzes and documents effects
- Authorizes Take
  - Outside preserve
  - Inside preserve
    - Monitoring
    - Management
    - other

## Public Policy

- Provide for economic growth
- Assure public safety
- Other ecosystem services
- Social expectations
- Establishes a public trust

# Multiple Land Uses and Available Conservation Lands

- BCCP covers an urban and urbanizing setting
- At its inception much of the undeveloped habitat had preexisting land uses or planned land uses
- Many undeveloped tracts had “social” land uses

# Multiple Land Uses and Available Conservation Lands

- Existing dedicated parks
  - Parks with traditional uses and undeveloped access
  - Nature preserve parks
  - District parks
- New dedicated parks
  - Wilderness parks and greenbelts
- Bond funded preserve lands
  - Bond covenants that provided for “passive” public Access”

# Multiple Land Uses and Available Conservation Lands

Public access and species effects:

- No baseline for extent or intensity of preexisting uses in parks or for unauthorized uses on private lands
- No baseline for species monitoring prior to public access
- In a recovery environment there is little research focused on effects of recreation on species recovery

# **An HCP is Public Policy**

- The HCP, BO, and federal permit establish public policy.
- Their implementation will be subject to interpretation.
- Interpretation (and implementation) without a defined process will be chaotic.
- Contemplate appropriate processes to drive interpretation.

# BCCP Lessons Learned

- Document the research on effects
- Be clear about what will be authorized and what will not
- Recognize that your planning today will not address all the possibilities or changing social values
- Provide specific policy
- Include processes with clear direction to address changing expectations, perceptions, values, and knowledge

# BCCP Lessons Learned

- As a BAT focus on what you can control.
- Understand that your HCP will not focus solely on conservation or recovery.
- Anticipate public policy commitments
- Anticipate conservation challenges they bring
- Define baseline conditions
- Build a process that will allow practitioners to correlate social needs with conservation needs in a manner that assures conservation will prevail.

# BCCP Lessons Learned

Other issues to consider:

- Transportation
- Public services infrastructure
- Wildland Urban Interface
  - Wildland fire
  - Nuisance wildlife
  - Uninformed neighbors

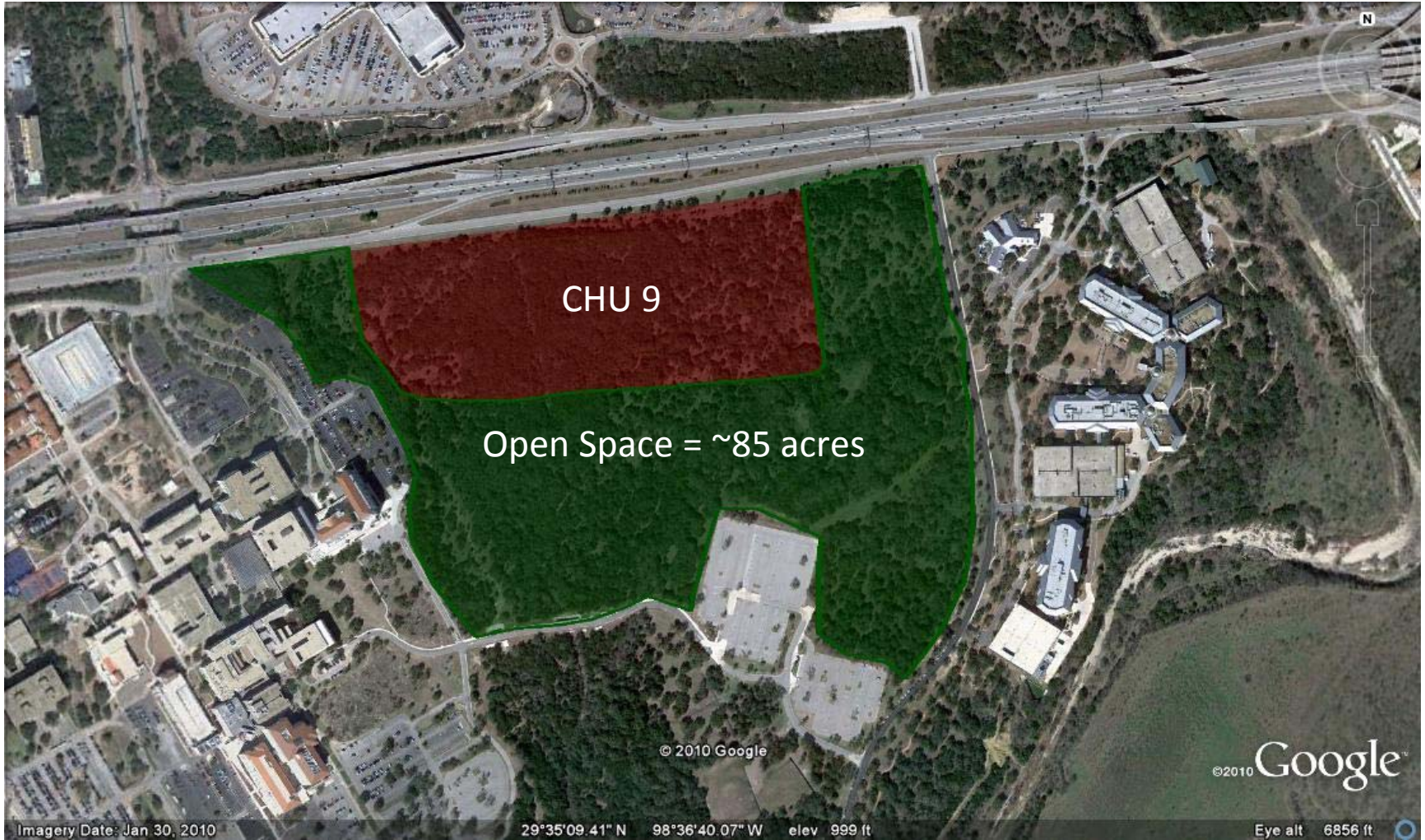
Presentation slides from Jean Krejca (Zara Environmental) regarding the location and configuration of karst Critical Habitat Units in Bexar County.

**Google Earth Pro** - Google Earth uses the latest available aerial photography (1-3 years old)

**Methodology:**

- Create polygons around the open space bordering CHUs
- Calculate acreages of polygons of open space
- Use large roads or development as borders to open space polygons
- Exclude areas with little or no vegetation such as agricultural fields, rock quarries, or ranch land with few trees





CHU 9

Open Space = ~85 acres

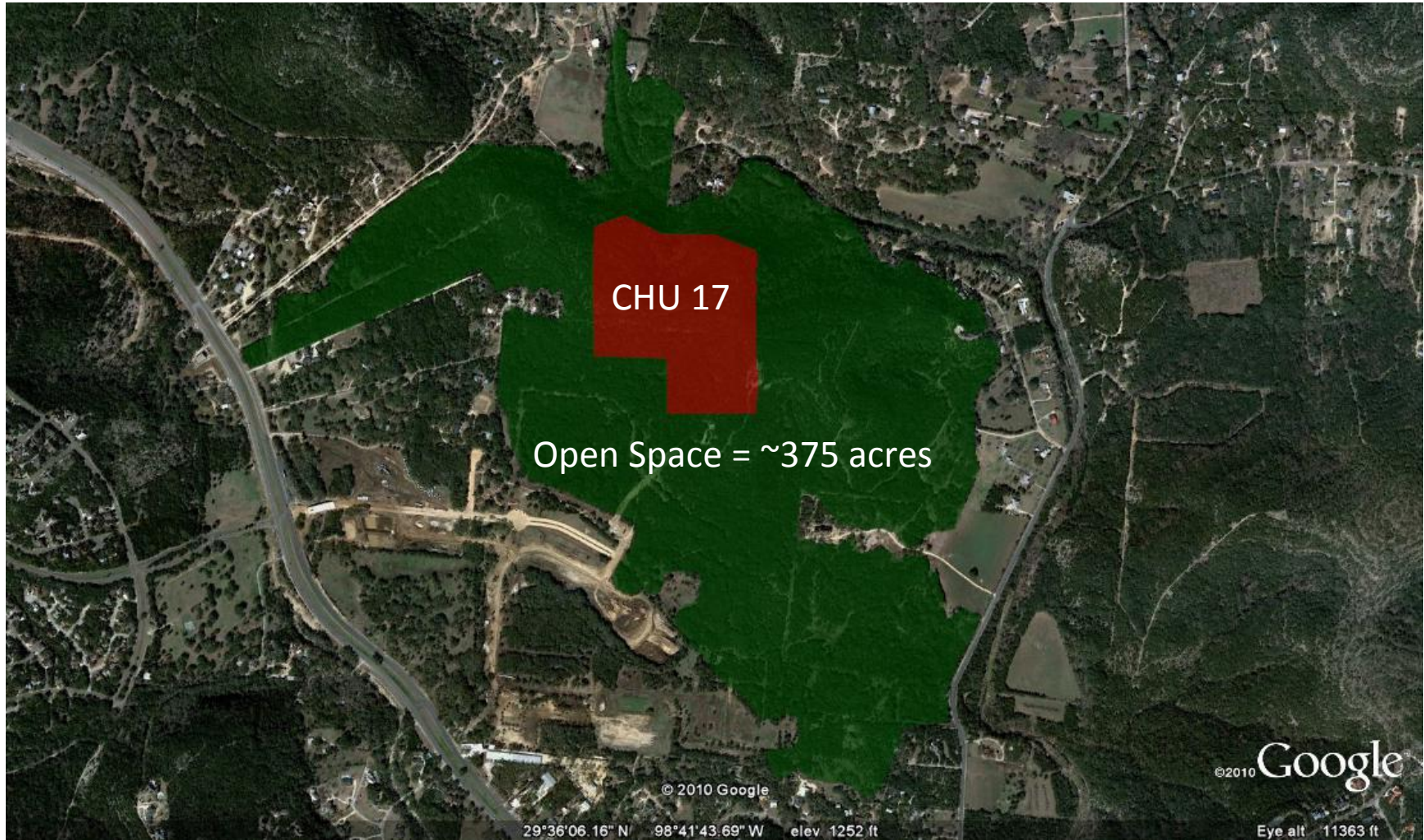
© 2010 Google

©2010 Google

Imagery Date: Jan 30, 2010

29°35'09.41" N 98°36'40.07" W elev 999 ft

Eye alt 6856 ft



CHU 17

Open Space = ~375 acres

© 2010 Google

29°36'06.16" N 98°41'43.69" W elev 1252 ft

©2010 Google

Eye alt 11363 ft



CHU 20

Open Space = 0 acres

© 2010 Google

©2010 Google

Imagery Date: Jan 30, 2010

29°30'13.56" N 98°27'35.75" W elev 828 ft

Eye alt 7274 ft