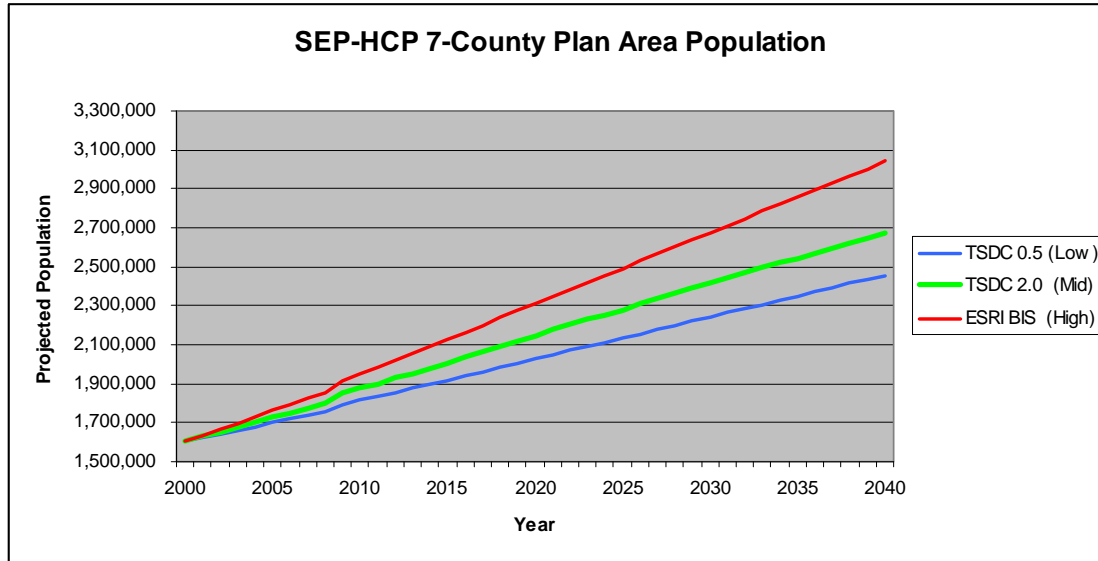


SEP-HCP PRELIMINARY IMPACTS ANALYSIS SUMMARY

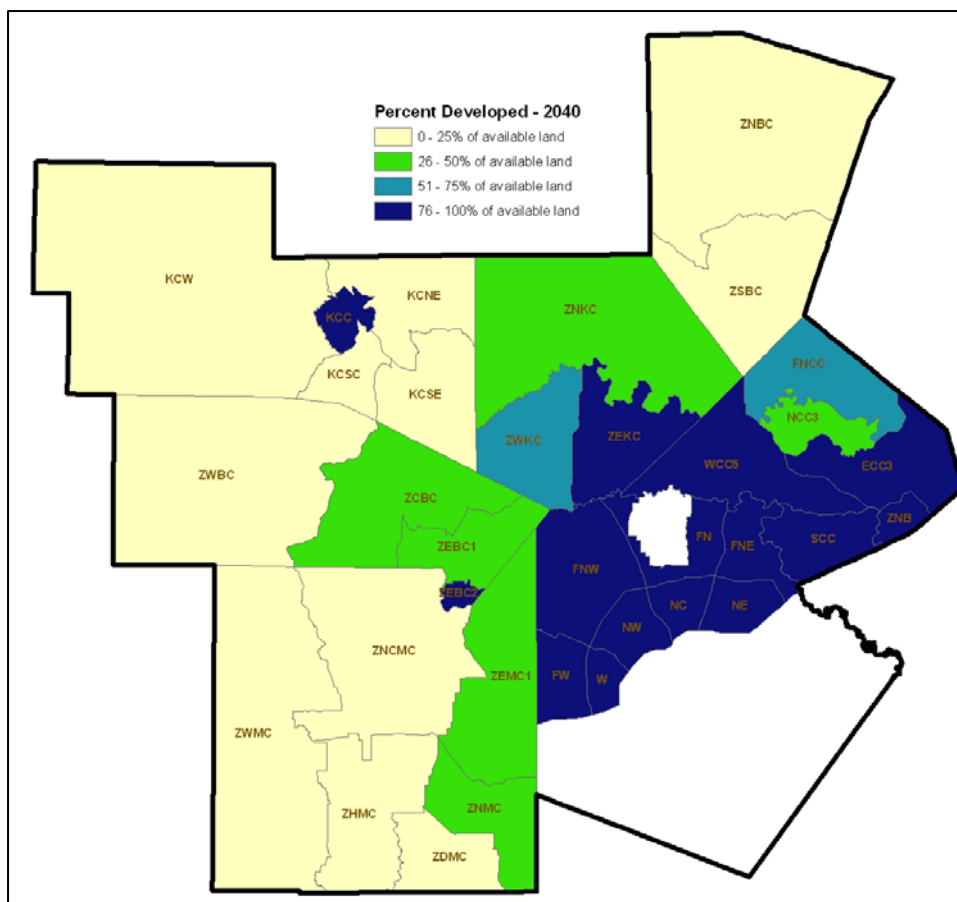
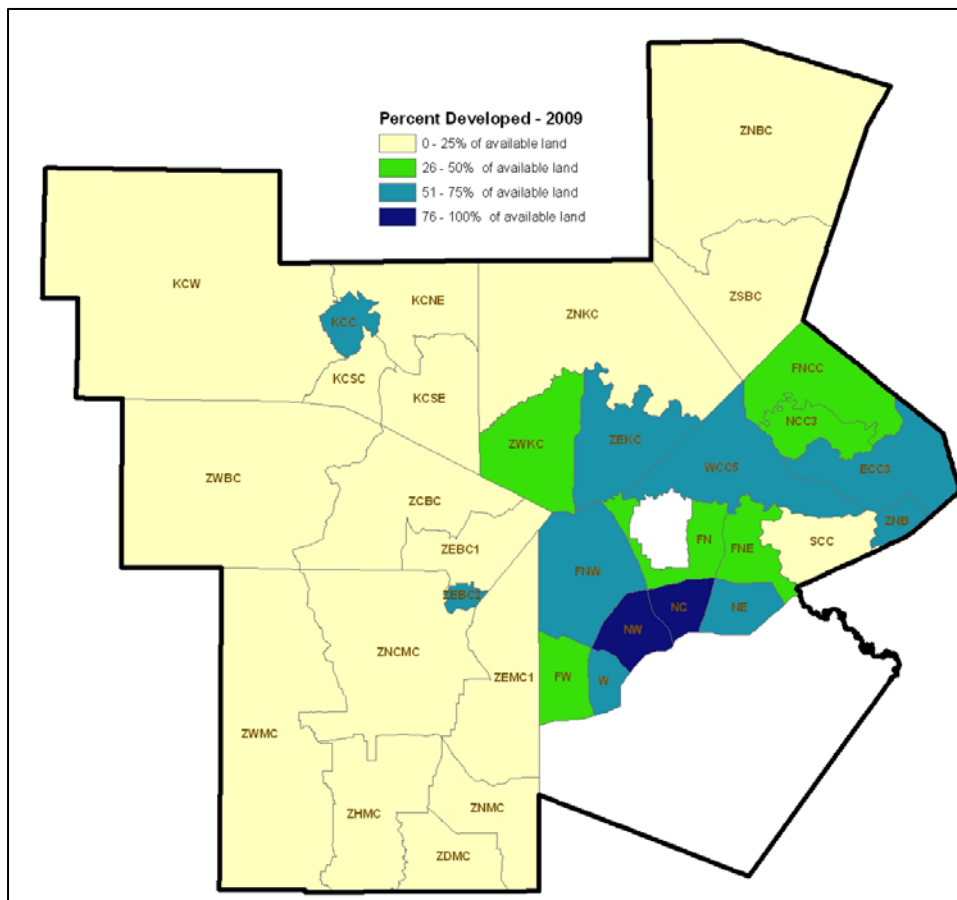
Projected Population Growth



Land Development Projections

County	Area of LU Sectors (ac)	Acres of New Development				Total Acres of New Development 2009 - 2040
		2000 - 2009	2009 - 2020	2020 - 2030	2030 - 2040	
Bandera	510,319	6,538	6,233	3,940	12,951	23,124
Bexar*	300,101	64,163	42,681	36,253	10,372	89,306
Blanco	456,589	677	789	592	4,369	5,750
Comal	367,673	45,387	25,091	21,089	40,599	86,779
Kendall	424,289	22,663	14,342	5,192	56,764	76,298
Kerr	708,840	5,336	6,466	4,060	4,721	15,247
Medina	853,888	11,622	13,846	10,543	20,323	44,712
TOTAL w/o Comal	3,254,026	110,999	84,357	60,580	109,500	254,437

* Not all of Bexar County was included in the land use analysis – see maps next page



Estimated GCW Habitat Loss

County	Potential GCW Habitat in 2000 (ac)*			Estimated GCW Habitat Loss 2009 – 2040 (ac)			
	Low Estimate	Mid Estimate	High Estimate	Low Estimate	Mid Estimate	High Estimate	Average Annual Loss (Mid)
Bandera	103,919	218,963	244,466	3,090	8,249	9,777	266
Bexar	52,069	92,785	99,880	14,635	26,317	28,404	849
Blanco	20,591	79,526	113,754	240	1,162	1,614	37
Comal	72,016	157,961	173,950	16,573	37,367	40,939	1,205
Kendall	18,778	80,371	112,133	4,253	15,937	21,372	514
Kerr	83,755	201,368	234,591	1,115	3,809	4,604	123
Medina	73,527	113,833	121,440	4,842	6,250	6,434	202
TOTAL w/o Comal	352,639	786,846	926,264	28,175	61,724	72,205	1,991

* GCW habitat estimates based on Loomis GCW Habitat Model:

- Low Estimate = Potential habitat of any quality class that is **Likely To Be Occupied**
- Mid Estimate = Potential habitat of any quality class that **May Be** or is **Likely To Be Occupied**
- High Estimate = Complete Loomis Model - **all quality and occupancy** classes (including habitat that is **Not Likely To Be Occupied**)

Estimated BCV Habitat Loss

County	BCV Habitat Estimate (ac)*	Estimated BCV Habitat Loss 2009 – 2040 (ac)	Ave Annual BCV Habitat Loss 2009 – 2040 (ac)
Bandera	7,599	344	11
Bexar	47,854	5,315	172
Blanco	2,275	29	1
Comal	3,591	847	27
Kendall	4,945	890	29
Kerr	53,074	1,143	37
Medina	62,292	3,257	105
Total w/o Comal	178,039	10,978	354.2

* As reported in Wilkins et al. (2006)