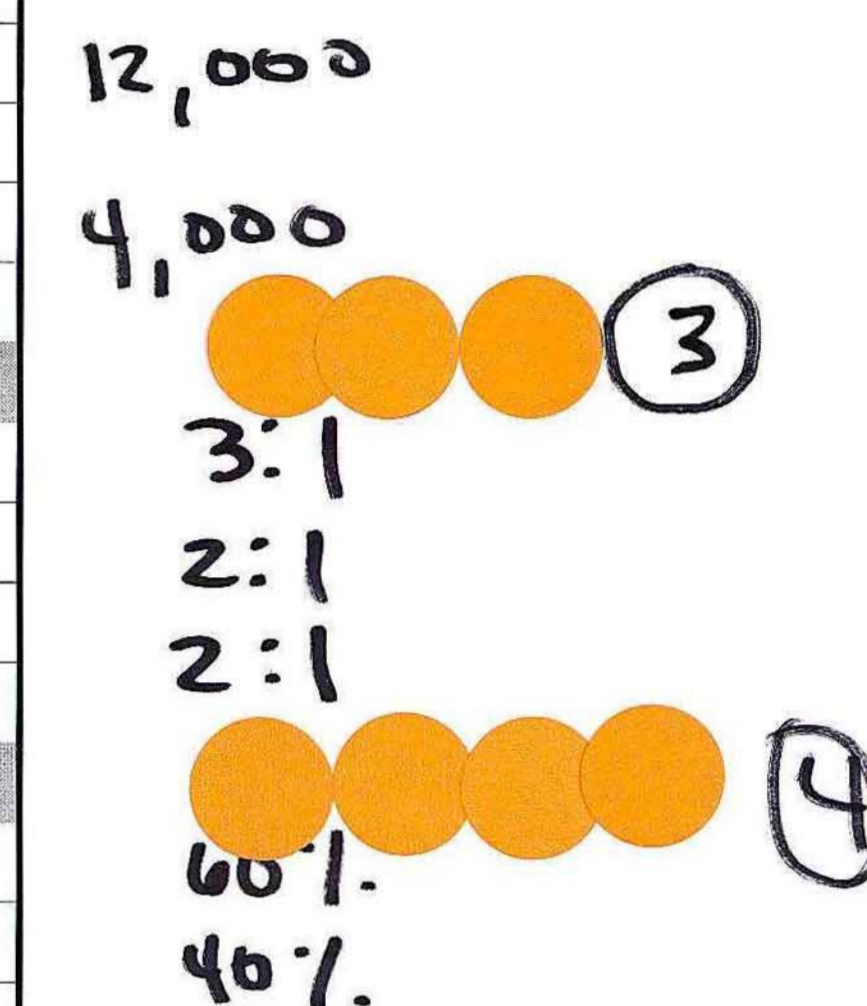


Alternative GCW/BCV Program Scenarios Based on Priorities Identified from CAC Small Group Discussions.

Alternative	Group 1	Group 2	Group 3	Group 4
Priorities:	<ul style="list-style-type: none"> - Lower authorized habitat loss - High participation fees to discourage habitat loss - Moderate public funding is acceptable - Large total preserve - Large Bexar County preserve 	<ul style="list-style-type: none"> - Lower authorized habitat loss - High levels of plan participation is important - Low Bexar County preserve size - Public funding acceptable to acquire Bexar County preserves - Moderate participation fees that market can bear 	<ul style="list-style-type: none"> - Slightly larger amount of authorized habitat loss - Even mitigation ratios across Plan Area - Moderate to large total preserve system - Small to moderate Bexar County preserve system - No or low public funding 	<ul style="list-style-type: none"> - Large total preserve system - Large Bexar County preserve system - Substantial public funding acceptable - Participation fees within ability of market to bear
Participation Rate / Authorized Habitat Loss				
GCW - Bexar County	33% / 4,911 ac	20% / 2,977 ac	50% / 7,442	50% / 7,442 ac
GCW - Rural Counties	15% / 1,966 ac	20% / 2,621 ac	35% / 4,558 ac	20% / 2,621 ac
GCW - Total	25% / 6,877 ac	20% / 5,597 ac	43% / 12,000 ac	36% / 10,062 ac
BCV - All Counties	25% / 2,319 ac	20% / 1,874 ac	43% / 4,000 ac	36% / 3,396 ac
Mitigation Ratios				
GCW - Bexar County	3:1	2:1	2:1	3:1
GCW - Rural Counties	2:1	1:1	2:1	2:1
BCV - All Counties	2:1	1:1	2:1	1:1
Preserve Distribution				
GCW - Bexar County or 5 miles	60%	20%	10%	40%
GCW - Rural Areas	40%	80%	90%	60%
BCV	assumed to be rural	assumed to be rural	assumed to be rural	assumed to be rural
Preserve Size				
<i>(based on Participation Rate, Mitigation Ratio, and addl. 25% acreage for buffers and habitat variation)</i>				
GCW - Bexar County or 5 miles	11,051 ac	1,488 ac	1,860 ac	11,162 ac
GCW Rural Areas	12,281 ac	9,229 ac	28,209 ac	23,295 ac
GCW - Total	23,332 ac	10,718 ac	30,070 ac	34,458 ac
BCV - Total	5,797 ac	2,343 ac	10,102 ac	4,245 ac
GCW/BCV Total	29,129 ac	13,060 ac	40,172 ac	38,703 ac
Estimated GCW/BCV Program Costs				
<i>(includes costs for preserve acquisitions and estimated 30% additional for management and administration)</i>				
Total Cost	\$377,608,947	\$78,405,974	\$135,254,014	\$384,491,718
Participation Fees				
<i>(shown below as total fee per acre of habitat loss - i.e., the per acre fee multiplied by mitigation ratio)</i>				
GCW - Bexar County	\$16,500	\$6,000	\$6,000	\$7,500
GCW - Rural Counties	\$11,000	\$3,000	\$6,000	\$5,000
BCV - All Counties	\$11,000	\$3,000	\$6,000	\$2,500
Participation Fee Revenue				
<i>(based on full use of Authorized Habitat Loss)</i>				
GCW	\$144,306,536	\$36,156,921	\$101,444,328	\$96,872,843
BCV	\$35,854,728	\$7,902,737	\$34,078,763	\$11,934,933
Total Fee Revenue	\$180,161,265	\$44,059,659	\$135,523,091	\$108,807,776
Public Funding				
<i>(based on the amount necessary to fill the gap between Total GCW/BCV Program Costs and Participation Fee Revenue)</i>				
Amount (over 30 years)	\$197,447,683	\$34,346,315	\$0	\$275,683,942
Private : Public Funding Ratio				
Participation Fees %	48%	56%	100%	28%
Public %	52%	44%	0%	72%

Group 5
BAT Recommendations



7,442
2,621
10,062
3,396 } Not a BAT Recommendation.

3,000
1,500
1,500 } Not a BAT Recommendation.

12,000 - 90,000